

MO-644D

2-NEEDLE, 2/3/4 THREAD OVERLOCK SEWING MACHINE WITH BUILT-IN ROLLED HEMMING AND DIFFERENTIAL FEED

MO-644

2-NEEDLE, 2/3/4 THREAD OVERLOCK SEWING MACHINE WITH BUILT-IN ROLLED HEMMING

MO-623

1-NEEDLE, 2/3 THREAD OVERLOCK SEWING MACHINE WITH BUILT-IN ROLLED HEMMING

JUKI®

Garnet Line

HOME SERGERS



**Juki Lock Home Sergers Are Easy To Use,
And Are Known For Their
High Quality Sewing Performance**



Activewear



Tailored Serging



Casual Wear



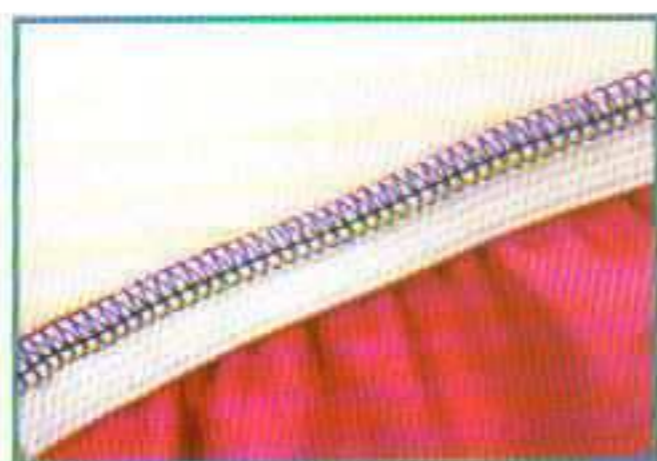
Evening Wear

Perfect For Clothing, Home Decorating & Crafts

OPTIONAL ATTACHMENTS TO ENHANCE YOUR SEWING CAPABILITIES



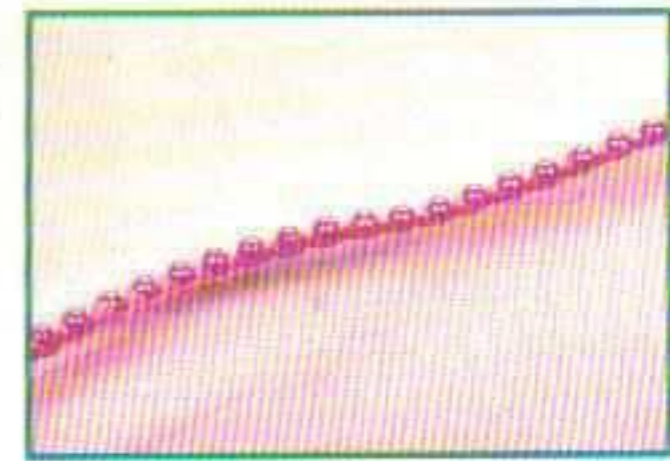
2/3 Thread Converter



Elasticator Presser Foot



Blind Stitch Presser Foot



Beading Presser Foot



Piping Presser Foot



Cording Presser Foot



Gathering Presser Foot



Snap On/Snap Off Presser Foot Replacement

for use with MO-644/644D

for use with MO-644D

FEATURES AT A GLANCE

Item	MO-644D	MO-644	MO-623
Sewing Speed	Maximum 1,500 s.p.m.		
Number of Threads	2/3/4 Threads		2/3 Threads
Needle	Household Machine Size 11 or 14		
Overlocking Width	Left Needle: 8 mm / Right Needle: 4 mm Rolled Hem: 2 mm		Standard: 4 mm Rolled Hem: 1.0 - 1.5 mm
Stitch Length	1 - 4 mm (Standard: 2.5 mm) / Rolled Hem: 1.0 - 1.5 mm		
Differential Feed	0.07 : 2.0 Ratio	—	—
Tension	Industrial Type Dial / 1 Rotation		
Built-In Rolled Hemming	Right (Narrow) or Left (Wide) Needle / 2 or 3 Thread		Right Needle / 2 or 3 Thread
Flatlock	Right or Left Needle / 2 or 3 Thread		2 or 3 Thread
Universal Presser Foot	Tape, Ribbon, Narrow Elastic Application		
Presser Foot Lift	5 mm		
Dimensions	270 mm (w) x 340 mm (D) x 295 mm (H)		270 mm (w) x 260 mm (D) x 295 mm (H)
Weight	7.0 kg (15 lbs)		

JUKI
Union Special
JUKI UNION SPECIAL, INC.



Corporate Headquarters

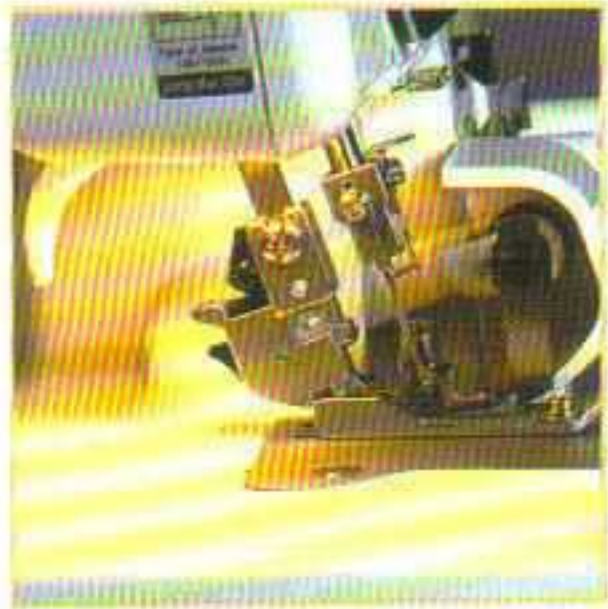
5 Haul Road
Wayne, NJ 07470
Phone: (201) 633-7200
Fax: (201) 633-9629

California Division

14518 Best Avenue
Santa Fe Springs, CA 90670
Phone: (310) 483-5355
Fax: (310) 404-4194

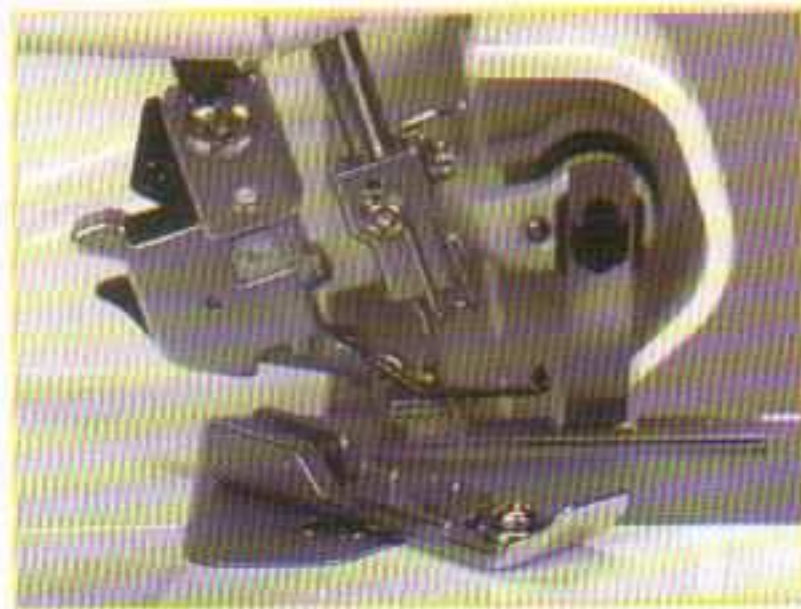
YOUR AUTHORIZED JUKI DEALER

Juki Technology Makes Serging Accurate And Easy



Sewing Light

is placed to give optimum lighting to the fabric and needle areas.



Multi-Purpose Foot

comes equipped with a slotted tape guide which can be used to sew woven tape, elastic, sequins and ribbon.



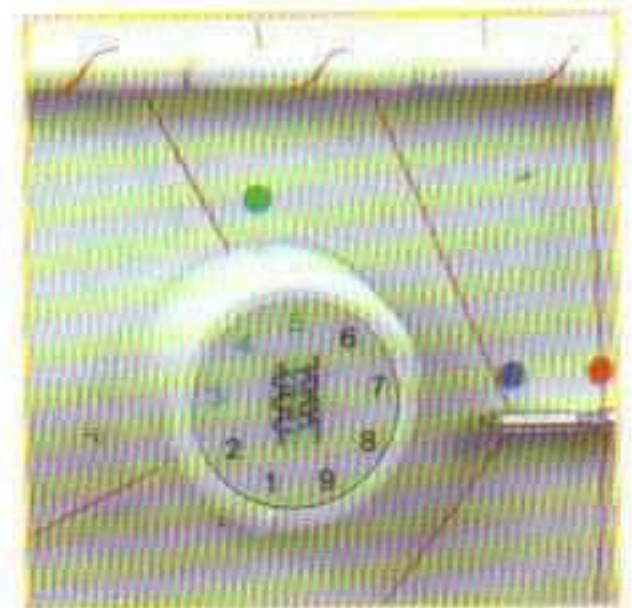
Color-Coded Threading Guides

throughout the machine make threading easy and efficient.



Automatic Rolled Hemming

can now be created quickly and easily with built-in fingertip controls. There is no need to change the foot or plate.



1-Rotation Thread Tension Dials

with normal tensions highlighted for simple, consistent tension adjustment.



Easy Dial Knife Adjustment

The upper knife is completely self-adjusting.



Electronic Foot Control



Sewing Width Gauge

is conveniently located on the guard cover for easy access.



Heavy Duty Knife System

operates with dedicated drive to assure consistent and easy cutting of light to heavy weight fabrics.



Differential Feed Dial

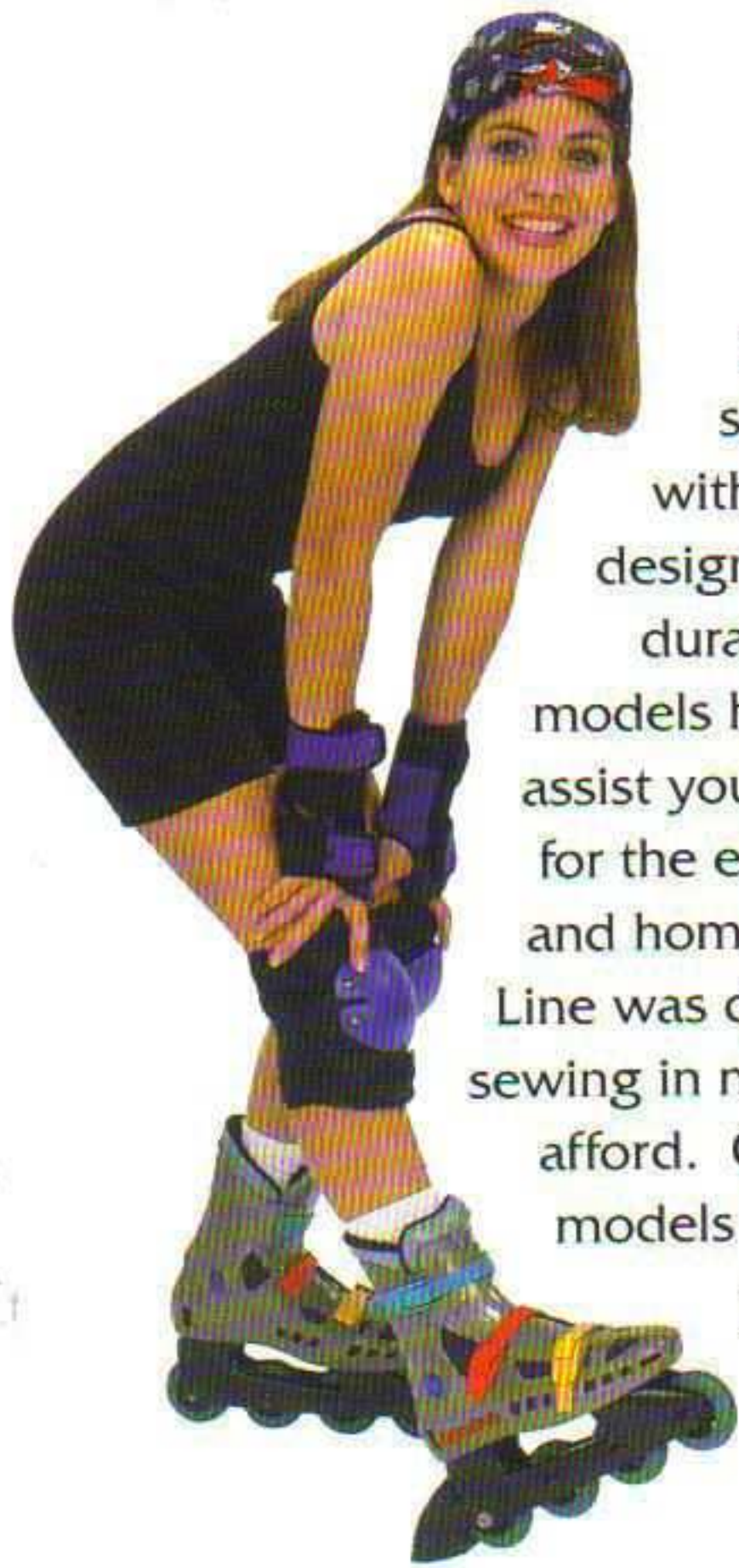
is controlled and adjusted by a dial conveniently located on the outside, left-hand side of the machine (MO-644D only).



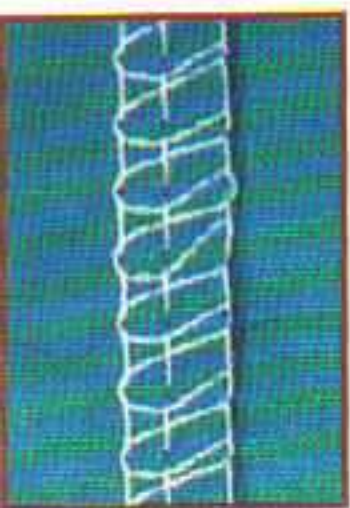
Adjustable Stitch Length

by simply turning the knob inside the machine within the range of 1 to 4 mm.

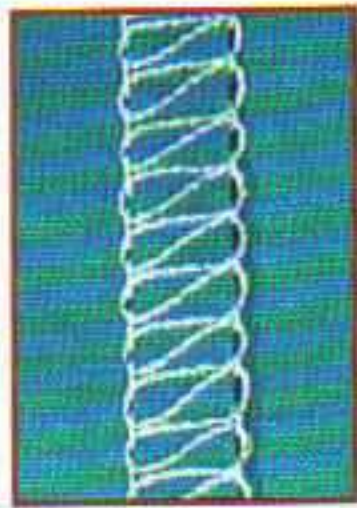
Perfect for the Beginner or Advanced Sewer



With the Garnet Line of home sergers, a beginner or experienced sewer can create simple sportswear or elegant evening wear with unbelievable ease. Expand your range of design and technique with the easy to operate, durable and dependable Juki Locks. These models handle the latest materials and threads to assist you in sewing the most fashionable apparel for the entire family, as well as accessories, crafts and home decorating items. The Garnet Line was developed with all types of sewing in mind, at a price you can afford. Choose one of three models available and get a precious serger at semi-precious prices!



4-Thread Overlock



3-Thread Wide Overlock



3-Thread Narrow Overlock

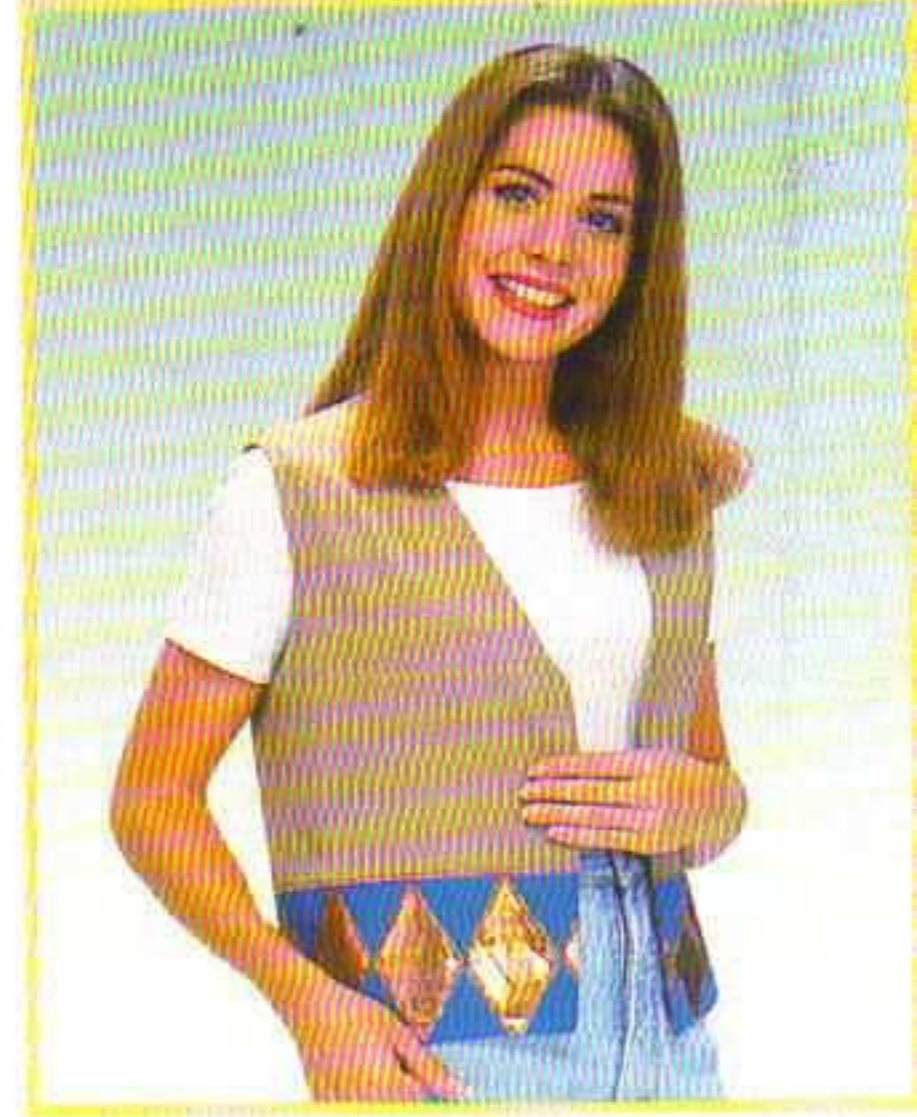
Decorative Flatlock And Rolled Hem Accessory



Rolled Hemming And Gathering Techniques



Wearable Art And Tailored Serging



Flatlock Seam And Wearable Art